

## HectoGel Monotype Printing Plate for Unique Prints

### **Important Safety Information:**

Read and follow all safety instructions on all products and equipment. This is not a process for unsupervised children. The gelatin is not intended for human or animal consumption and must be kept away from children and pets. Tools and equipment used for art should be clearly labeled and never be used for food. **Dispose of any gelatin in the trash. Never pour gelatin down a drain as it may cause blockages.** The gelatin mixture is hot and can cause burns. Wear appropriate protective clothing, gloves, and eye protection.

### **Materials you will need:**

#### **Ingredients to Make the HectoGel Monoplate**

- DASS ART Universal Transfer Gelatin - 10 level Tablespoons
- DASS ART WONDERSAUCE (clear or white) - 2 Tablespoons
- 2 ¼ cups Cold Distilled Water
- ½ Cup Natures Oil Vegetable Glycerin (found on Amazon)
- Sodium Benzoate (found on Amazon or Walmart)
- ¼ Cup 91% Isopropyl Alcohol (found at local Walgreens, Target, Walmart)

#### **Tools and Equipment**

- Measuring Cups and Spoons (plastic)
- Quart sized Glass Pyrex Measuring Cup
- Plastic 3 Quart Mixing Bowl
- Silicon Spatula
- Microwave, Crock Pot or Hot Plate & Pot
- Infrared Thermometer
- 6.5"x 8.8" Clamshell Box or Non-Stick Baking Tray at least ¾" deep
- Safety Equipment, Gloves, Eye Protection, etc.
- Leveling tool
- 2 Microwave proof Deli containers
- 1 piece of Acrylic (peel off the protective sticky paper)

#### **Things Needed to Create Prints on the HectoGel Monoplate**

- Plexiglass to use as the Monoplate Base 8"x10"
- DASS ART SuperSauce Gloss Concentrate
- DASS ART SuperSauce Gloss Solution (make sure mixed 2 days before doing transfers – Use A 3 cup/ 500 ml Wide-Mouth Ball Jar and an additional 8-ounce bottle of 91% Isopropyl Alcohol – mixing directions are on the bottle)

- DASS ART Dual Film (\*flipped" images printed at least 24 hours before transferring. B&W Images work best to learn with)
- Acrylic paint colors of your choice. Alcohol Inks can also be used to create Monoprint Backgrounds
- 9" Paint Roller Cover
- 3"- 4" Soft Brayer (found on Amazon or local art store)
- Some 2" Sponge Brushes
- Soft Acrylic paint brushes - various sizes
- Any Smooth paper to pull your monoprints (DASS ART Optimized Yupo Paper, Stone Paper, Evolon Paper, Typing Paper, Mix Media Art Paper, Cover Stock, Watercolor Paper, Pacon 4-ply Railroad Board, even previously transferred prints - best if sealed with SuperSauce Solution.
- Backing for your layered gelatin plate creations: Reemay #2014 Fabric (Bonny's go to), Flower sack towels at dollar store, Freeze Fabric for the garden (green version is most like Reemay – polyester), Waterleaf Paper like Arches 88 (Reemay can be used like paper to pull prints. The fibers capture detail and leaves a great ghost image that can be pulled next with paper. Or use as support backing for layered pieces built on plate. Double up if the Reemay is thin).
- Gesso – Clear or White or Black – Whatever color you like. Liquitex has a clear.
- Golden Soft Gel Medium – great to use instead of Gesso or as glue to your final substrate or as a transfer medium to move the inkjet image to the plate, or as a sealant topcoat.
- Things to make impressions with: Stamps, Stencils, Lace, Gears, Chain, Leaves, Laser-cut Shapes, Cheap Plastic Cookie Cutters. Make sure they will not cut or puncture the Gelatin Plate. Make your own stamps with glue or hot glued designs on wood or plastic supports.
- Blue Painters Tape
- Hairdryer
- Viva Paper Towels – thick with no pattern – perfect to wrap paint roller with.
- 1/8" Ampersand Panels or Canvas Panels – to mount finished pieces onto
- Have a bucket of water near your workspace for throwing in brushes etc.
- Have a separate drying area from your main workspace.

**\*\*NEVER pour the left-over gelatin down a drain. Use paper towels to clean tools**



## **2 Step Process**

Step 1 - Make one or more HectoGel Printing Plates

Step 2 - Make paint pull monoprints Followed by SuperSauce inkjet transfers on top of HectoGel monoprints and finally a direct transfer onto the Gel Plate with layered with paint, Reemay backing, overnight dry down and a next day pull

## **Instructions to Make the DASS HectoGel Printing Plate:**

### **Step One:**

- Level your work surface using a level and place the non-stick tray or clamshell box on it when pouring the gelatin and curing the plate overnight.

### **Step Two:**

*(The day before you make your plate, test your microwave with a quart of cold water. Set the microwave on medium. Heat the water in 15 second bursts to determine how often and about how long you will need to heat and stir to get the water to 150-degrees).*

- Put the cold water in a 1-quart glass Pyrex or similar heat-proof container. Add the gelatin and stir. It will swell and look like a heavy applesauce.
- Put the container in the microwave and warm it on medium for 15 seconds to 1-minute increments, check the temperature with your IR Thermometer and then stir the gelatin with the silicon spatula to remove all big lumps and gelatin from the side of the Pyrex. Check temperature and stir with each iteration.
- Avoid higher power or longer times to keep bubbles and foam to a minimum.
- Repeat until it reaches 150 Degrees Fahrenheit –**make sure it doesn't go over 150 degrees!**
- Allow to cool while you proceed with step three.

### **Step Three:**

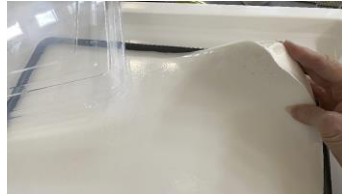
- In a 2-quart plastic bowl, Combine the Glycerin, Sodium Benzoate and WonderSauce.
- Stir until smooth and creamy
- Slowly add the 91% Isopropyl Alcohol, stirring until the mixture is smooth.

### **Step Four:**

- Carefully pour the gelatin into the large plastic bowl of liquid from step two.
- Gently mix the solution with a silicon spoon or spatula until the temperature drops. Make sure the mixture is evenly smooth.
- When the mixture drops to 110-degrees, slowly pour the liquid into the non-stick tray or clamshell container.
- Use the sharp cut edge of a piece of heavy card stock paper to draw across the surface and remove any foam or bubbles from the surface and along the sides.
- Allow it to set up overnight before gently removing it from the box for use by gently tugging at one corner. Larger plates may take up to 24 hours to cure. Do not put a lid or covering over the plate until it has dropped to at max 85 degrees. You do not want to trap any condensation with the plate. (The alcohol and glycerin are plasticizing the plate, not temperature.)
- If you want to permanently emboss one side of your plate, wait until the plate has set up, about an hour – hour+1/2, and place your embossing items onto the plate. Cover these items with a sheet of plexiglass and place a gallon of water or about 8-10 pounds, on it for the overnight cure. Do not use items that will cut or puncture the plate. When you pull the print from the embossed plate the

embossed area will be blank leaving a place for your transfer image. Both sides of your Gel Plate can be used to pull prints (one side can be embossed and the other smooth).

- To ready for use, gently pull up and out, one corner of the HectoGel Plate and work down the rest of the body of the plate to release it from the clamshell or baking pan/mold/storage container. Place it on a clean non-absorbent smooth surface like acrylic Plexiglas and enjoy pulling your prints! (The bottom side that touched the clamshell or pan will be the smoothest side to work on.)



## **MAKING PRINTS**

### **DASS Monoprint Transfer Instructions:**

- Create a monoprint background using various paints applied with a brayer or soft brushes onto the HectoGel plate. Build up layers with colors, stamps, embossed items, etc. The first color applied is the color on top.
- Place the paper on the plate and smooth with a brayer for good contact, then pull up the paper.... you now have your first monoprint! You can continue with more pulls one right after another getting lighter and lighter ghost prints or you can build up more paint, ink, stamps etc. and do more pulls.
- Set the pulled prints aside to completely dry – use a hairdryer to speed up the process.
- Pick your printed DASS Art Dual Film that you want to transfer to the monoprint background and check for placement. (If the monoprint is very textured, it can be sanded down with a fine sandpaper for better/full contact).
- Line up the printed film making sure the emulsion/printed side is down, and tape one edge with blue tape. Flip the film back away from the monoprint.
- Apply the SuperSauce **Solution** (WonderSauce will also work) using a 2" sponge brush. Do not be too generous. Make sure there are no puddles. Using the Paint Roll Cover, push the film down and across the monoprint background.
- It may take up to 3 minutes or more for the transfer to complete. Run your finger around the edge to break the emulsion to get a good transfer. Pull up the edges to check if the transfer is ready. Then peel the film back – not up.
- Set the print off to the side to dry.
- Once the paint and transfer are completely dry, De-slime by carefully washing off the slime (inkjet emulsion) and let dry - or
- Seal the print with a layer or two of SuperSauce Solution and let dry.

- If you would like to make additional transfers on the same monoprint, apply SuperSauce **Solution** and make the transfer. Let dry. Seal the print with Supersauce Solution and let dry. SuperSauce Solution can always be used as a final glaze. Or use your preferred topcoat.

### **DASS Film Transfer to HectoGel Plate Instructions:**

- Line up the printed film making sure the emulsion/printed side is down. Do not touch the plate; just eyeball how you are going to lay the film down. Set the film off to the side.
- Apply the SuperSauce **Concentrate** across the entire gel plate using a **brayer**. (Brushes and Sponge brushes leave marks that will affect the transfer.) Do not be too generous with the sauce. You want an even coat, so lightly roll with the brayer. Make sure there are no puddles. Apply the film for transfer. Set down the very edge of the short side of the film. Using the Paint Roll Cover, firmly push the film down and across the HectoGel Plate. For larger plates, roll your film backwards onto PVC pipe, then press firmly and unroll (you may need 2 people).
- It may take up to 5-10 minutes or more for the transfer to complete. Run your finger around the edge to break the emulsion to get a good transfer. Pull up the edges to check if the transfer is ready. Then peel the film back – not up.
- Let the HectoGel Plate dry then de-slime (gently wash off the slime (inkjet emulsion) under room temp water, do not touch transfer while doing this or you may damage it.
- If too much sauce was used for the transfer, let the plate dry. Do not De-slime. Use a hairdryer to speed up the drying time.
- Paint directly on top of the transfer. The first color or affect you apply is the top layer. If your paints are opaque, be mindful of how you apply your paint if you are planning to add another transfer. You can push into the painted surface with shapes, use stamps with ink, or use acrylic ink. There are many directions you can go with this step!
- Let the whole thing dry.
- To add another transfer, cover the painted plate with SuperSauce **Solution** and make your transfer and let dry. A second or even third transfer layer could be a picture of a frame.
- Add more paint and effects and let dry.
- Seal the entire painted HectoGel plate with Gesso or Golden Soft Gel Medium and immediately cover with Reemay or very light muslin. Smooth into the Gesso with brayer.
- Let dry overnight. If it feels cold to the touch, it is not dry. Depending on thickness of paints and humidity, it could take up to 2 days to dry.
- Run your fingers around the edge to break the emulsion from the plate. Pull up the edges to check if the print is ready. Peel the monoprint back – not up.
- Use Gel Transfer Acrylic Medium to glue / mount your print to its final backing substrate. It is not necessary to topcoat your work

### **Caring for your plate**

- Clean your plate after use by washing it under cold running water – Dawn dish soap works well.
- You can remove leftover sauce and paint with a foam brush, but do not use an abrasive sponge as it will damage the surface. The DASS Art Coating Bars work great for scrubbing as well as Purdy Paint Brushes as they have a sturdy core but very soft end bristles. Room key cards are good to clean edges. (Never use Mr Clean sponges as they are filled with micro abrasion crystals.)
- Some colors may stain the surface but that will not affect the future prints.
- While the plate is mold resistant, it's best to wipe the storage container down with 91% isopropyl alcohol or white vinegar, allow it to dry, then using clean hands place the plate in the container and seal it. Do not use hand sanitizer or baby wipes to clean the plate or box as the additives may change the characteristics of the plate.
- Do not leave paint on the surface for extended periods of time as it may permanently stick. This is especially true if the plate has dried out, so keep it in a closed container after cleaning.
- If the edges do dry out, pour a few tablespoons of distilled water in the container and seal, the plate should rehydrate. Once it rehydrates, carefully wash it with kitchen detergent (Dawn works well) and blot it dry, then store in a sealed box or container.
- Avoid folding the plate in half, especially for larger sizes as they can crack and split.
- The side of the plate that was against the container is smoother and works best to pull prints. Put the plate back into the container the same way you took it out for it to fit perfectly and not be bent.
- Do not leave the plate in direct sunlight or hot locations. It can be stored in a refrigerator dedicated for art use as long as the container is sealed.

### **Clean up tips:**

To clean Paint and SuperSauce **Concentrate** from tools and brushes – use soap and water. Dawn dish soap works great.

To clean SuperSauce **Solution** from brushes – **don't**. Either keep the brush inside the Ball Jar with the Solution or throw brush out. If you add water to a brush with solution on it – it will render the brush useless as it will turn the solution on the brush into an uncleanable goo.

### **HectoGel Plate Longevity**

Plates can last 5 months or longer depending on usage and care. HectoGel Plates can be melted down at 150-degrees to make a new one. Make sure to add more sodium benzoate (preservative) to the melted mixture before pouring into new mold. Old Jello Molds could be interesting plate forms or stamp forms

To make bigger HectoGel Plates increase the portions of the recipe. For a 9x12 made in a Wilton Baking Pan multiply the recipe by 3. This will give you a nice 1"+ thick plate. For a 12x16 plate multiply by 4. It is easier to make larger batches in a crock pot. Keep

in mind, larger plates can take longer to cure. Also, it's easiest to use a crockpot if melting old plates. Use a turkey bag to line the inside the crockpot to keep it clean.

**Keep the Transfer gelatin and plate you make out of reach of children and pets. This is NOT food.** Read the labels on all the products used to make the HectoGel Plate including the alcohol bottle. Use 91% Isopropyl Alcohol or White Vinegar to rinse containers – white vinegar kills mold.

## DASS ART HectoGel Product Resource List

•Virtual & In Person Dass Art Workshops < Take the workshop!

<https://dassart.com/workshops/>

•SuperrSauce Gloss – 16oz

<https://dassart.com/product/supersauce-concentrate-gloss-16oz/>

•SuperrSauce Matte – 16oz

<https://dassart.com/product/supersauce-concentrate-matte-16oz/>

•WonderSauce White – 16oz

<https://dassart.com/product/wondersauce-white-16oz/>

•WonderSauce Clear – 16oz

<https://dassart.com/product/wondersauce-clear-32oz-copy/>

•DASS ART Universal Transfer Gelatin 1.5lbs (4 cups)

<https://dassart.com/product/dass-art-gelatin/>

•DASS ART Dual Transfer Film

<https://dassart.com/product-category/transferfilm/>

•DASS ART Videos

<https://vimeo.com/dassart>

•Flypaper Textures, Natural Bits

<https://flypapertextures.com/natural-bits-textures/>

•Nature's Oil (USP Grade-Kosher) Vegetable Glycerin 100% Pure (10 lbs) Gallon (search for 16oz)

[https://amazon.com/gp/product/B00WUPUYCC/ref=ox\\_sc\\_saved\\_title\\_1?smid=A2S5SG4CMI156J&psc=1](https://amazon.com/gp/product/B00WUPUYCC/ref=ox_sc_saved_title_1?smid=A2S5SG4CMI156J&psc=1)

•Sodium Benzoate 99% USP/FCC Grade 8 oz (Ounce) Preservative, Additive

[https://amazon.com/Sodium-Benzoate-Grade-Preservative-Additive/dp/B084D4YH1W/ref=sr\\_1\\_3?dchild=1&keywords=sodium+benzoate&qid=1623129770&sr=8-3](https://amazon.com/Sodium-Benzoate-Grade-Preservative-Additive/dp/B084D4YH1W/ref=sr_1_3?dchild=1&keywords=sodium+benzoate&qid=1623129770&sr=8-3)

•18" x 26" Cambro DB18263P148 Dough Proofing Retarding Pans / Boxes

(box and lid sold separately)

<https://www.rewonline.com/category/4958/Pizza-Smallwares/key/Cambro-DB18263P148>

•Cambro DBC1826P148 Pizza Dough Box Cover for the aablov box

<https://www.rewonline.com/category/4958/Pizza-Smallwares/key/Cambro-DBC1826P148>

•Wilton Ultra Bake Professional 12" x 16" Nonstick Large Baking Pan with Cover

<https://www.target.com/p/wilton-ultra-bake-professional-12-x-16-nonstick-large-baking-pan-with-cover/-/A-14901179#Ink=sametaab>

•A4 Clear File Storage Box

[https://amazon.com/dp/B085ZLVMHX?psc=1&ref=ppx\\_yo2\\_dt\\_b\\_product\\_details](https://amazon.com/dp/B085ZLVMHX?psc=1&ref=ppx_yo2_dt_b_product_details)

•**DUOFIRE Clear A4 File Box**

[https://amazon.com/DUOFIRE-Portable-Document-Organizer-Magazine/dp/B0869G267Z/ref=dp\\_prsubs\\_1?pd\\_rd\\_i=B0869G267Z&psc=1](https://amazon.com/DUOFIRE-Portable-Document-Organizer-Magazine/dp/B0869G267Z/ref=dp_prsubs_1?pd_rd_i=B0869G267Z&psc=1)

•**BENECREAT 4 Pack 8.8x6.5x1.2" Large Rectangle Clear Plastic Storage**

<https://www.amazon.com/BENECREAT-8-8x6-5x1-2-Rectangle-Containers-Findings/dp/B08R8ZM3HH>

•**Pacon 104159 Peacock Four-Ply Railroad Board, 22 x 28, White, 25/Carton**

[https://amazon.com/dp/B00VY5KYSI?psc=1&ref=ppx\\_yo2\\_dt\\_b\\_product\\_details](https://amazon.com/dp/B00VY5KYSI?psc=1&ref=ppx_yo2_dt_b_product_details)

•**Reemay #2014**

<https://www.talasonline.com/Reemay?quantity=1&number=561&length=108&width=31>

•**Evolon AP 98gsm 22"x30" 15 sheets**

<https://greystonepaper.com/products/evolon-ap-98gsm->

Check the DASS ART Facebook Groups for inspiration!  
See DASS ART Videos on Vimeo.

**[www.dassart.com](http://www.dassart.com)**

DassArt on Instagram

Videos: <https://vimeo.com/dassart>

<https://www.facebook.com/groups/dassarthectogel>





## **ADDITIONAL NOTES and things to think about:**

Be Thoughtful with what you are putting down and painting. Elevate from repetitive print pulling to actual layered works of art. If something doesn't work, paint over it with white and start over.

Making Art and Printmaking is definitely comforting, healthy and therapeutic in this day and age.

Take pictures of various stages and pulls from your plate. These images can be used as backgrounds for future inkjet prints.

Cracked Plates can be good. The crack will show in the pulled print. Wabi-Sabi – imperfections can be wonderful. “Cracked Plate Print Series”....

Add cracks for a stone look.... Mistakes can make the piece!

Reemay is used in K95 masks as it filters out Covid. Reemay is great for cold wax.

PETG – Food Safe Plastic. To make slump art bowls, bracelets, earrings....

Best thickness = 0.125. Best size for bowls = 12"x12"

Some online plastic companies have a remnants section where you can buy large sheets and take to your local plastic cutter to cut your needed sizes.

Acrylic paints stick to PETG it will also take SuperSauce Solution transfers. Do pulls directly onto the PETG sheet from the plate. Dry time should be double between each layer. When done, do a sealing coat of SuperSauce Solution. To make slump bowls but in Breville oven for 10-15 minutes never over 220-degrees. Plate will slump and then can be formed into your design.

Wonderflex Plastic used for medical supplies and costumes can also be transferred to. Transfer to both sides, heat with 150-degree water or heat gun to form shapes.

HectoGel Plate without a microwave or crockpot: I used a big metal bowl over a pot with water. I brought the gel mixture to temp and proceeded. I did so I could make a large plate. Easy peasy.

The crock pot I used held 8 quarts of the recipe which fill it to the top. That was the 8 batches of the recipe for the 16 x22. 9x12 = 3 batches.

A few have asked if there is a way to have the top of the slab as smooth as the bottom. YES Just use a piece of clear acetate or the back side of the DASS Transfer Film and cut it to the size of the inside of your container. Within about 15-30 minutes of pouring start at the narrow end and roll the film on the top. The next day when it is unboxed both sides will be smooth.

If you plan to store the Hectogel Plate for more than a week do this. After using the plate, handling it and applying paint and other contaminants the plate needs to be washed with Dawn dish detergent. Then rinse it under cold water. Also wash the clamshell or pan it is stored in. As a final rinse spray the surface of the Hectogel on all sides with white vinegar. Also spray the inside of the clamshell. Then shake the excess vinegar off the clamshell box and the Hectogel. Put it in the box and close it tight. This procedure will keep the plate fresh and prevent any bacteria or spores from forming on the plate in storage.

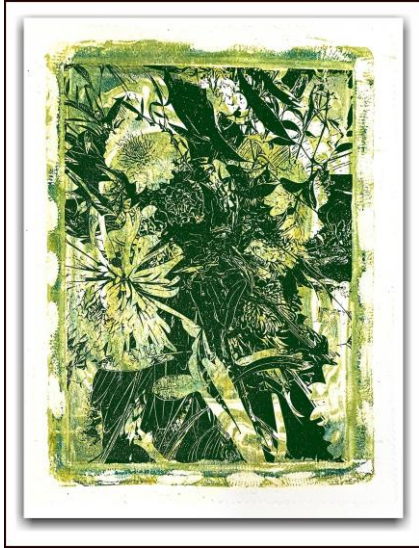
When you apply the SuperSauce Concentrate to the Hectogel apply it with a Speedball brayer. A foam paint roller will leave bubbles in the liquid, and you will not get a clean transfer. Roll down the film and leave the film in contact for 15 minutes. The entire images will transfer to the plate. After it dry it can be back painted. The lay down a piece to Reemay and seal the whole thing with white paint or gesso. You must leave it over night to dry. This was pulled on a sheet of .02 PETG. The view side is the clean untouched smooth side of the plastic. This can now be put in 150 degree water to soften the plastic so it could be shaped. The .02 material can be bought on Amazon for about \$1.00 per 12" x 12" pieces. When doing this leave the masking on one side to keep it clean and unscratched.

***All Images belong to Bonny Lhotka.***

The steps. 1 Transfer the inkjet photo the butterfly printed on Dass Dual Film to the Hectogel plate with SuperSauce Concentrate Clear. 2. Splash on paint colors and hand paint the butterfly. 3. Apply the SuperSauce Gloss concentrate again and transfer the teal leaf inkjet print. 4. Apply Reemay with Golden white gesso. Dry overnight then peel off the image from the HectoGelplate.



This is a three-color pull on the HectoGel plate using Reemay.  
The print was cut out and mounted on the DASS ART Optimized Yupo.  
Then I made an Adobe Shape file of flowers and toned all the black a dark green. I transferred it over the HectoGel print with SuperSauce Solution.



SuperSauce transfer over a HectoGel print is really easy.  
I used Adobe Shapes app to create the black only Dass Art Dual film transfer. The HectoGel plate was 12" x 16". This was pulled on Reemay spun bonded polyester.

