



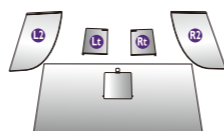
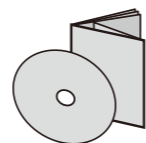
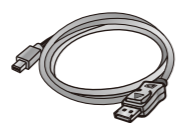
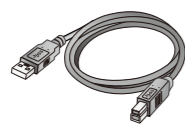
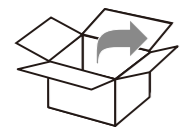
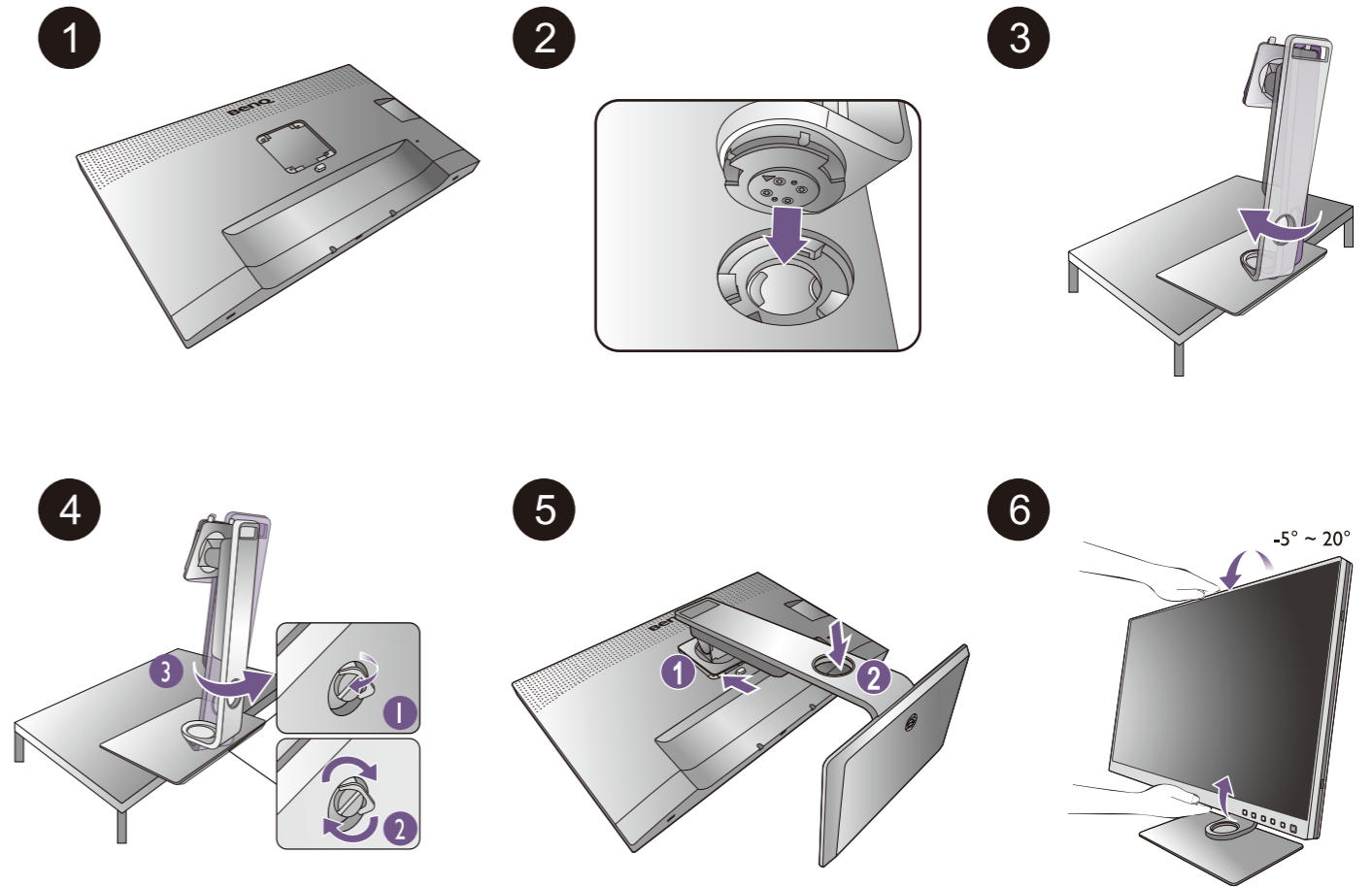
LCD Monitor Quick Start Guide

PhotoVue Photographer Monitor | SW Series

AQCOLOR™
Colors You Can Trust

DN: SW270C-Q-V0

© 2019 BenQ Corporation. All rights reserved. Rights of modification reserved.



USB-C™
(optional)

DP
(optional)

HDMI
(optional)

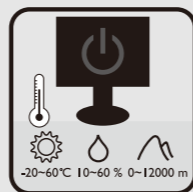
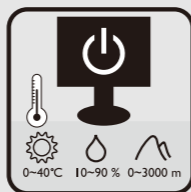
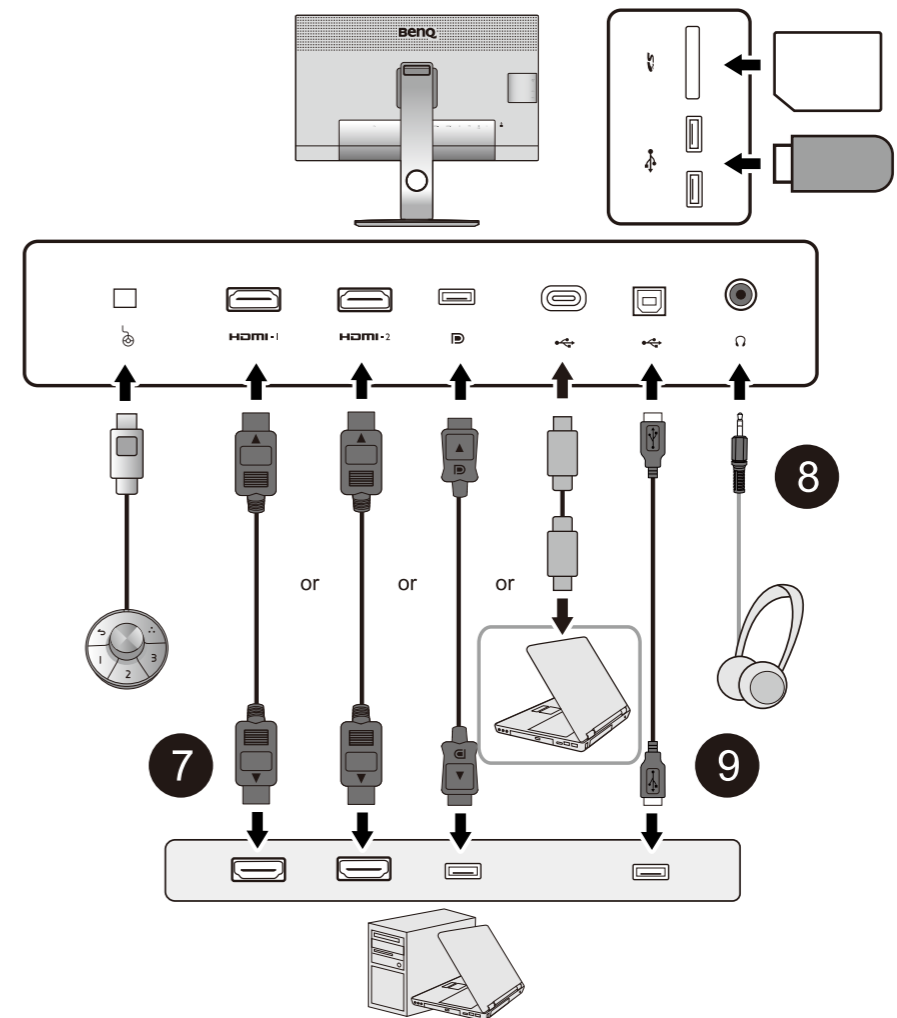
Audio
(optional)

Shading Hood

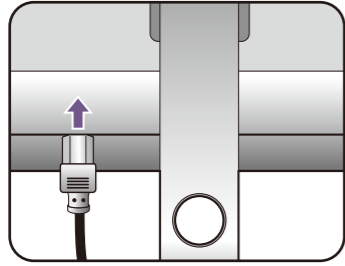
7 Video

8 Audio

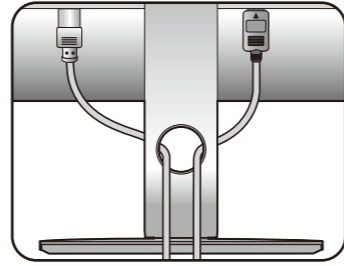
9 USB



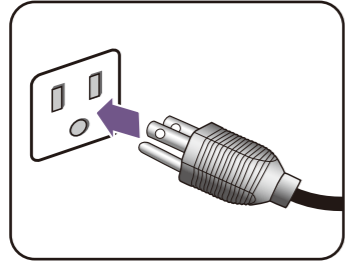
10



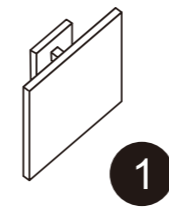
11



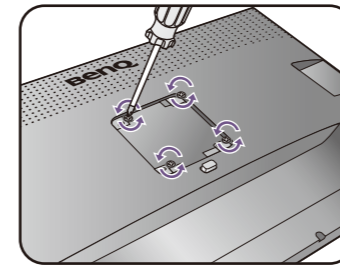
12



13

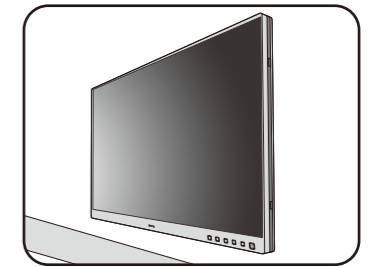


1

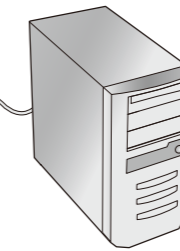
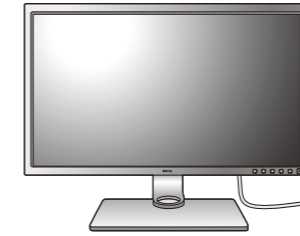


M4 x 10 mm

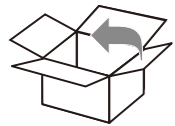
2



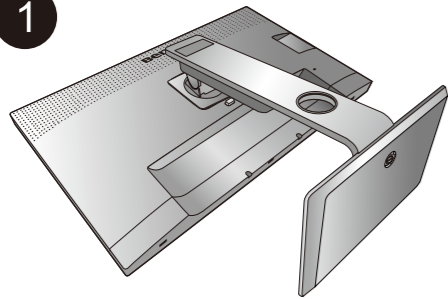
Palette Master Element



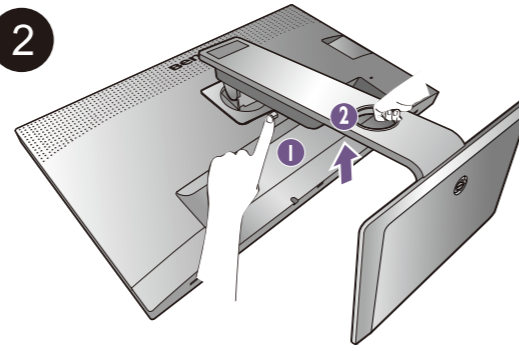
www.BenQ.com > SW270C Product Page > Download / Support



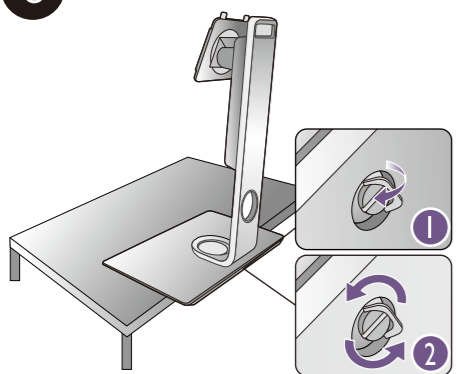
1



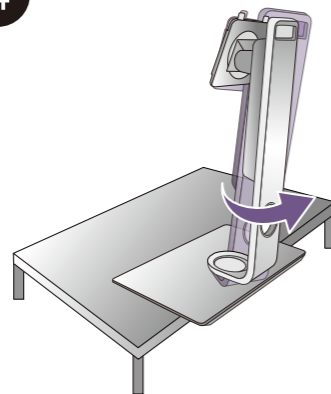
2



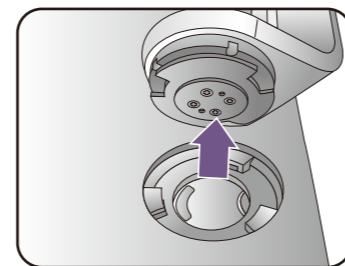
3



4



5



SW270C



Shading Hood



Hotkey Puck G2

