

Epson Stylus® Photo R2000

CREATIVITY THAT SHINES





EPSON



Epson UltraChrome Hi-Gloss® 2 larger capacity ink for an unmatched glossy look and feel*



Exclusive AccuPhoto™ HG image technology for fine blends, smooth transitions and consistent color



Achieving high-level creative results is a daunting task. It begins with you — your vision, your eye, your imagination. And it ends with the tools you use to bring those ideas to life. Which is where the Epson Stylus Photo R2000 comes in. It includes advanced features and quality you'd expect in a professional level printer — pigment-based inks, significantly larger capacity[†] cartridges and flexible media handling. You can also print anywhere in your home office or studio with both Ethernet and Wireless-N connectivity.

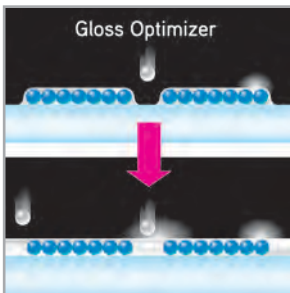
And the closer you look, the more advantages you find. This 13-inch wide ink jet printer also includes Epson UltraChrome Hi-Gloss 2 Ink and a revolutionary MicroPiezo[®] AMC[™] print head. Together they combine to create exceptionally high quality prints with an unmatched glossy look and feel. When it comes to performance and productivity, the Epson Stylus Photo R2000 will take your creativity to the next level.



ENVISION



CAPTURE



Epson UltraChrome Hi-Gloss 2 with Gloss Optimizer fills in gaps for a smooth, uniform surface and unprecedented gloss levels

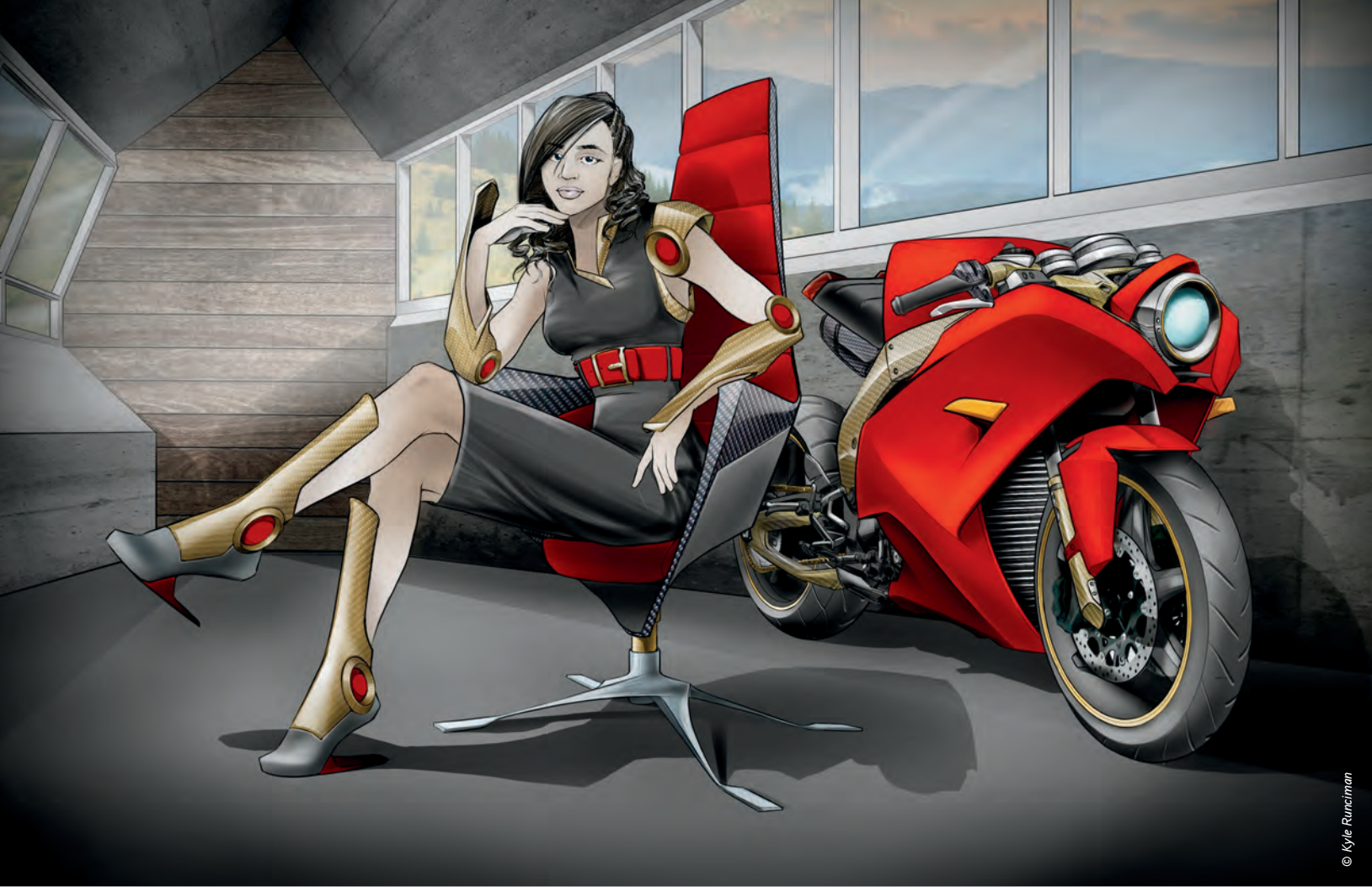
Hi-Gloss technology that really shines.

The Epson Stylus Photo R2000 features a remarkable 8-color pigment ink set that delivers unprecedented print quality you can share for a lifetime. Epson UltraChrome Hi-Gloss 2 includes Red and Orange inks to ensure an ultra-wide range of colors and smooth, vibrant skin tones. Additional enhancements to the ink set deliver lush greens and richer blues.

A refined Gloss Optimizer produces a superior gloss finish in both look and feel. The High-gloss Microcrystal Encapsulated inks include instant-dry properties and immediate color stability to ensure archival prints that are highly smudge, fade and water resistant. In addition, auto-selecting Photo and Matte Black inks deliver the deepest blacks and boldest colors on matte and photographic media.

Ink capacity for up to 50% more prints.*

The Epson Stylus Photo R2000 offers true professional productivity with significantly larger capacity[†] ink cartridges that can produce more prints between cartridge changes. This means less downtime and improved productivity. And, each color has its own individual cartridge so you replace only the one you need.



© Kyle Runciman

CREATE



Wireless-N, Ethernet and Hi-Speed USB 2.0 for convenient printing anywhere in your home or office

Unparalleled connectivity.

The Epson Stylus Photo R2000 comes with advanced connectivity features that enable you to choose the setup that suits your needs. Use the built-in 100 Mbit Ethernet for wired networking or the latest in Wi-Fi CERTIFIED™ 802.11n technology for the fastest wireless connectivity to date.† If you prefer a direct connection, the R2000 also offers Hi-Speed USB 2.0. With this kind of flexibility, you have the convenience and peace of mind that comes with knowing you can print anywhere the need arises.

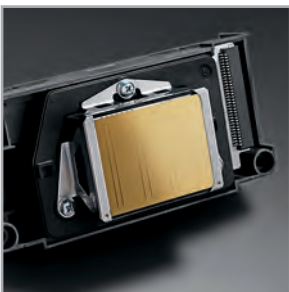
Advanced imaging technology.

Created through a collaboration between Epson and the Rochester Institute of Technology's Munsell Color Science Laboratory, AccuPhoto HG imaging technology combines a complex mathematical architecture with advanced screening technology using Epson UltraChrome Hi-Gloss 2 Ink to create prints of unsurpassed quality.

Basically, it ensures precision placement of each individual ink droplet, resulting in smooth, grain-free images. Choosing from an extraordinary number of possible ink combinations for each color, this technology optimizes ink usage to maximize the color gamut while providing smooth color transitions and gradations. It also works to ensure your prints appear the same under varying lighting conditions, such as gallery light or ambient studio light.



TREASURE



*Advanced MicroPiezo AMC
print head for intricate detail
and sharp images*

This 8-color pigment ink system utilizes a new technology, Ink Density Optimization, that automatically mixes the pigments in the ink for more consistent color. These advanced technologies combine to produce outstanding image quality that stays true even in high-speed and lower resolution print modes.

MicroPiezo delivers amazingly intricate detail.

To say the Epson Stylus Photo R2000's 8-channel MicroPiezo print head with AMC is advanced is a bit of an understatement. It is, quite simply, a marvel of Epson's ink jet technology, and the proof can be found hanging in many of the world's finest art galleries. High-performance in every way, it creates variable-sized droplets as small as 1.5 picoliters and places them with remarkable accuracy and precision.

The MicroPiezo print head also features an ink-repelling coating which improves print quality and increases reliability. A built-in sensor saves time by enabling automatic print head alignment and automatic nozzle cleaning, thus ensuring trouble-free printing while prolonging the life of your printer. And, working in conjunction with PreciseColor™ technology, the print head delivers consistent print quality every time from every Epson Stylus Photo R2000.



SHINE



Cut-sheet and roll paper, photographic and fine art paper, canvas (as shown above), art boards and CD/DVDs are among the media handling options

Unsurpassed media flexibility.

Like all professional quality printers, the Epson Stylus Photo R2000 supports a full range of media. It can print BorderFree® photos from 4" x 6" up to 13" x 19" in popular photo and paper sizes, including 12" x 12". It easily handles glossy, luster, matte and fine art media, including canvas. It also accommodates 1.3 mm thick board, ink jet printable CD/DVDs and roll paper for panoramas up to 13" x 44".

Whether you're printing a series for gallery display, a comp for presentation or a customized CD or DVD, the Epson Stylus Photo R2000 has the capability and versatility to deliver outstanding results to even the most particular individuals.

The printer that will make your creativity shine.

The Epson Stylus Photo R2000 is the future of Epson UltraChrome Hi-Gloss 2 photo printers. Its multitude of features make stepping up to a professional level printer a seamless move. From industry-leading pigment ink technology to significantly larger[†] cartridges, advanced imaging technology, professional media versatility and unparalleled connectivity, this is a serious tool that delivers results so stunning you'll get rave reviews from the most demanding of critics.

Epson Stylus Photo R2000 Printer Specifications

Printing Technology

Advanced MicroPiezo AMC print head with ink-repelling coating technology
8-channel, drop-on-demand, ink jet print head

Ink Type

Epson UltraChrome Hi-Gloss 2 pigment ink
8-color (C, M, Y, PK, MK, R, OR and GO)

Nozzle Configuration

Color and Monochrome heads 180 nozzles x 8

Droplet Technology

Smallest droplet size 1.5 picoliters
Variable Droplet Technology can produce up to three different droplet sizes per print line

Maximum Resolution

5760 x 1440 optimized dpi

Printer Speed[†]

8" x 10" print Approx. 1 min 8 sec
11" x 14" print Approx. 1 min 43 sec

Paper Types

Supports plain paper, Epson Bright White Paper, Presentation Paper Matte, Premium Presentation Paper Matte, Premium Presentation Paper Matte Double-sided, Ultra Premium Presentation Paper Matte, Photo Paper Glossy, Premium Photo Paper Glossy, Ultra Premium Photo Paper Glossy, Premium Photo Paper Semi-gloss, Ultra Premium Photo Paper Luster, Watercolor Paper Radiant White, Velvet Fine Art Paper, UltraSmooth[®] Fine Art Paper, Hot Press Natural, Hot Press Bright, Cold Press Natural, Cold Press Bright, Exhibition Canvas Matte, Exhibition Canvas Satin, Exhibition Canvas Gloss, Scrapbook Photo Paper Matte Double-sided and ink jet printable CD/DVDs

Printable Area

Maximum paper width 13"
Maximum cut-sheet size 13" x 19"
Minimum cut-sheet size 3.5" x 5"
Maximum printable area 13" x 44"

BorderFree Print Sizes

3.5" x 5", 4" x 6", 5" x 7", 8" x 10", A4 (8.3" x 11.7"), letter (8.5" x 11"), 11" x 14", 12" x 12", A3 (11.7" x 16.5") and Super B (13" x 19") sizes

Media Handling

Auto sheet feeder Up to 13" x 19"
Up to 120 sheets plain; 30 photo
Manual rear path Single sheet manual feeder,
designed for fine art paper
Roll paper 8.3" and 13" rolls
Front media path Up to 13" x 19"
Single sheet manual feeder, designed
for media up to 1.3 mm thick,
1 CD/DVD (using included tray)

Epson Intelligent Ink Cartridges

Ink cartridge shelf life 3 years from printed production
date or 6 months after opened

Environmental Characteristics

Temperature
Operating 50° to 95°F (10° to 35°C)
Storage -4° to 104°F (-20° to 40°C)
Relative humidity
Operating 20 to 80% (no condensation)
Recommended storage 5 to 85% (no condensation)

Safety Approvals

Safety standards UL1950, CSA 22.2 950 FDA
EMI FCC Part 15 subpart B class B,
CSA C108.8 class B
AS/NZS 3548 class B

Electrical Requirements

Voltage AC 110 – 120 V
Frequency 50 – 60 Hz
Current 0.6 A/110 – 120 V
Power consumption
Printing Approx. 21 W
Sleep mode Approx. 3.5 W
ENERGY STAR[®] qualified (Tier 2)

Acoustic Noise Level

Approximately 39 dB according to ISO 7779

Printer Language/Drivers

Epson ESC/P[®]2 raster photographic drivers standard

Weight/Dimensions

Printer weight 27.5 lb
Dimensions 24.5" (W) x 12.8" (D) x 8.6" (H)

Connectivity

Hi-Speed USB 2.0 (1 port)
100Base-T Ethernet (1 port)
Wi-Fi CERTIFIED (802.11n only)
PictBridge™ (1 port)

Operating Systems Supported

Mac[®] Mac OS[®] X 10.5.x – 10.6.x
Windows Windows[®] 7 (32-bit, 64-bit),
Windows Vista[®] (32-bit, 64-bit),
Windows XP, Windows XP Professional x64 Edition

Product

Epson Stylus Photo R2000 printer
Epson Stylus Photo R2000 printer (Canada)

Part Number

C11CB35201
C11CB35211

Extended Service Programs

1-year Extended Service Plan EPPSNVIJE1
2-year Extended Service Plan EPPSNVIJE2

Epson UltraChrome Hi-Gloss 2 Ink[®]

159 Photo Black ink cartridge T159120
159 Cyan ink cartridge T159220
159 Magenta ink cartridge T159320
159 Yellow ink cartridge T159420
159 Red ink cartridge T159720
159 Matte Black ink cartridge T159820
159 Orange ink cartridge T159920
159 Gloss Optimizer cartridges (2) T159020

† Compared to the Epson Stylus Photo R1900.

†† Not recommended for Wi-Fi 802.11 b/g. Level of performance subject to the range of the router being used. Visit www.wi-fi.org/files/11basics_glossary.pdf, under Range, for more information.

A Color photo speed in SuperFine Mode on Premium Photo Paper Glossy measured from start of paper feed. Actual print time will vary based on system configuration, software application and page complexity.

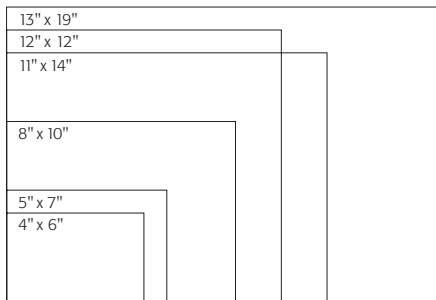
B Cartridge yields vary considerably for reasons including images printed, print settings, temperature and humidity. Yields may be lower when printing infrequently or predominantly with one ink color. A variable amount of ink remains in the cartridge after the "replace cartridge" signal. Part of the ink from the first cartridges is used for priming the printer. Ink is used for both printing and print head maintenance. All inks are used for both black and color printing, and all colors have to be installed for printing. For more information about cartridges, see www.epson.com/cartridgeinfo

www.epson.com/R2000

www.epson.ca/R2000

Better Products for a Better Future[™]

eco.epson.com



EPSON[®]
EXCEED YOUR VISION

Epson America, Inc.: 3840 Kilroy Airport Way, Long Beach, CA 90806

Epson Canada Limited: 185 Renfrew Drive, Markham, Ontario L3R 6G3

www.epson.com | www.epson.ca



Specifications and terms are subject to change without notice. Epson, Epson ESC/P, Epson Stylus, Epson UltraChrome Hi-Gloss and MicroPiezo are registered trademarks, Epson Exceed Your Vision is a registered logomark and Better Products for a Better Future is a trademark of Seiko Epson Corporation. BorderFree and UltraSmooth are registered trademarks and AccuPhoto, AMC and PreciseColor are trademarks of Epson America, Inc. Microsoft, Windows, Windows Vista and the Windows logos are trademarks of the Microsoft group of companies. All other product and brand names are trademarks and/or registered trademarks of their respective companies. Epson disclaims any and all rights in these marks.
Copyright 2011, Epson America, Inc. CPD-34156 XXX 5/11 XX